



Mural in Warrnambul, Australia

# WRITE DOWN THE ROAD

January 11, 2023  
at 7 pm MT



# Alma Taylor





# Alma Taylor



# Annette Wichmann – Maple Leaf Calligram



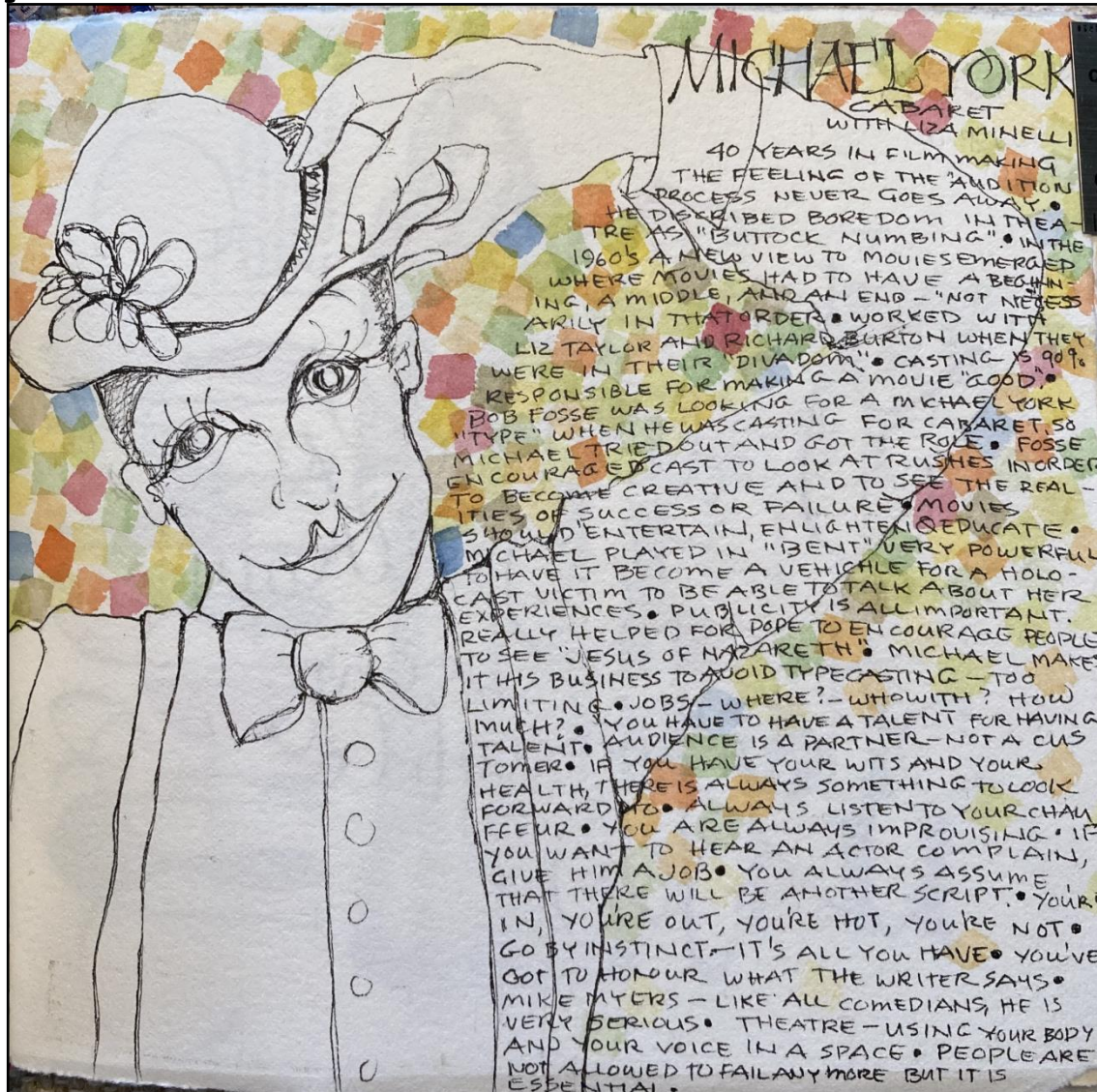


# Annette Wichmann – *You'll Never Know*



you'll never know until you go

# Betty Locke Michael York & Cabaret with Lisa Minelli

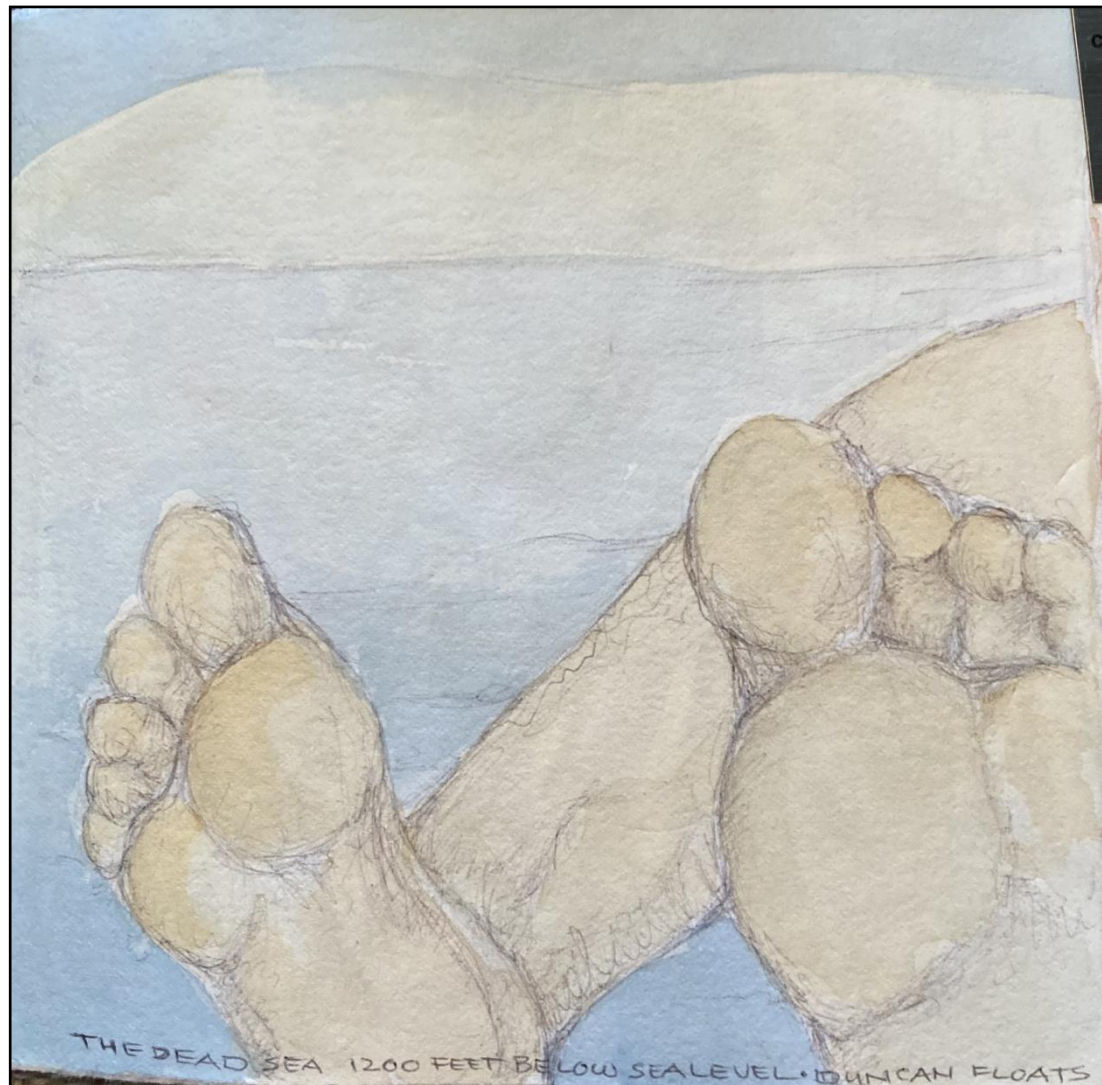




# Betty Locke - India



# Betty Locke — the Dead Sea

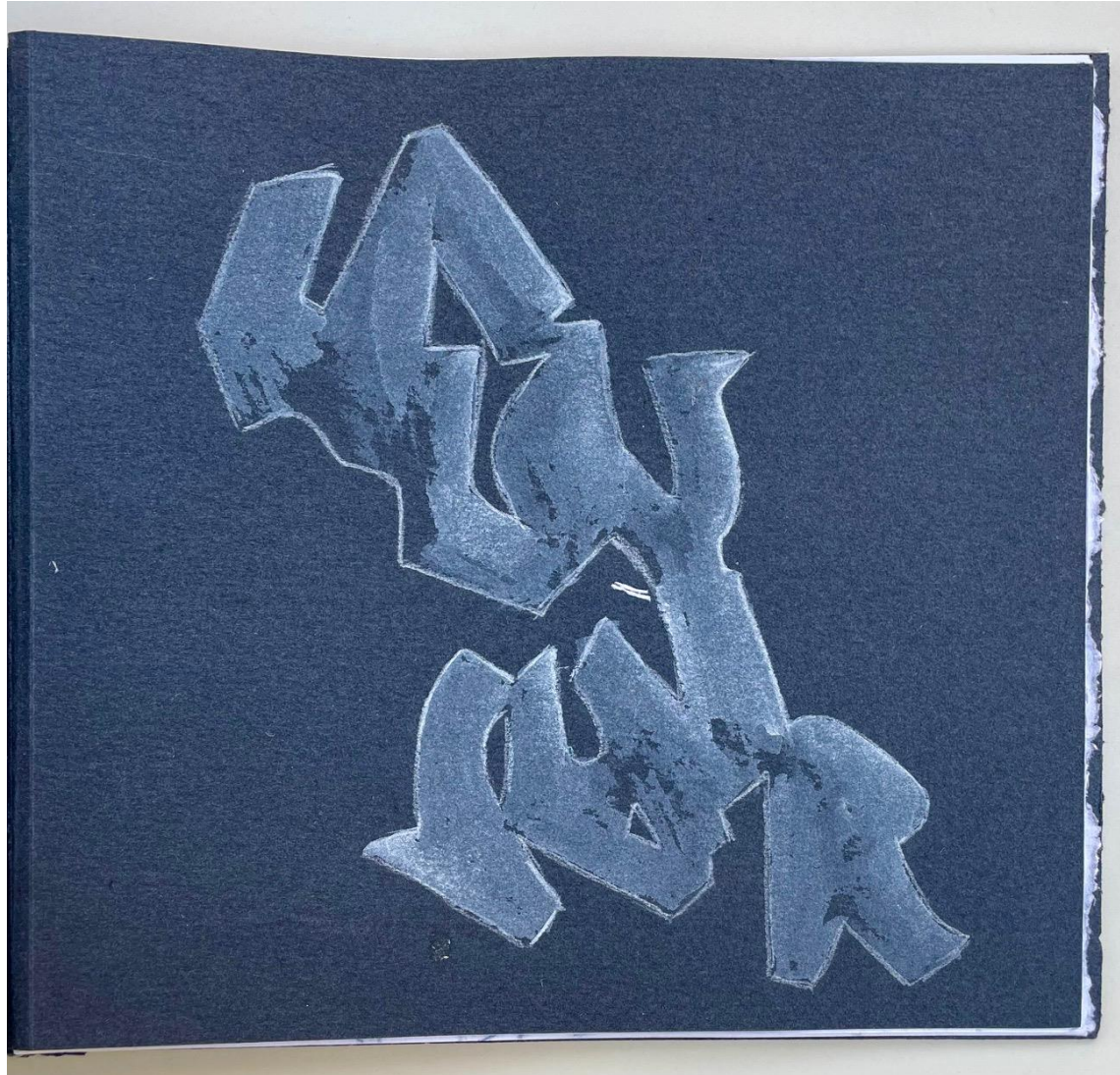




# Betty Locke – “ABAYA”

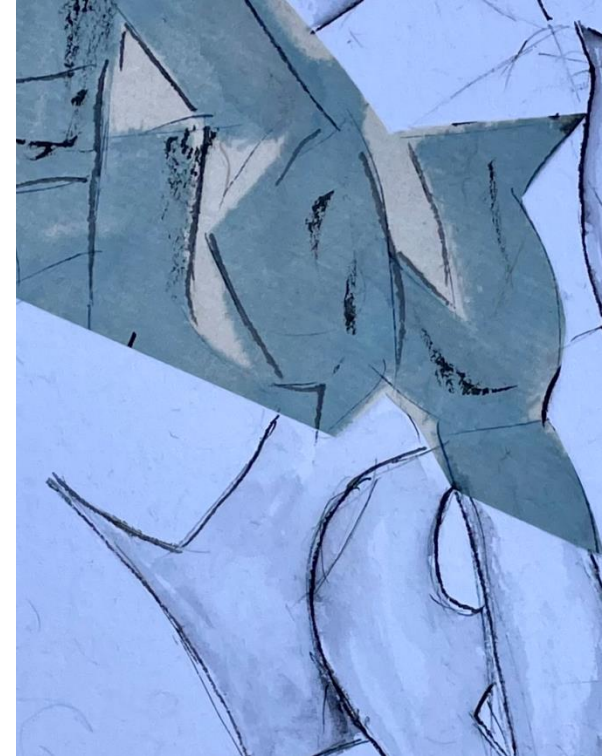


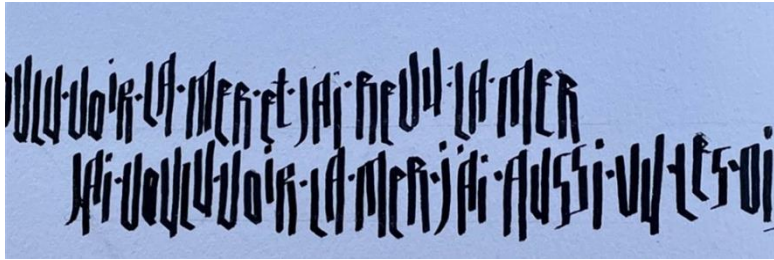
# Louise Rousseau — Ordinary Turned Epic



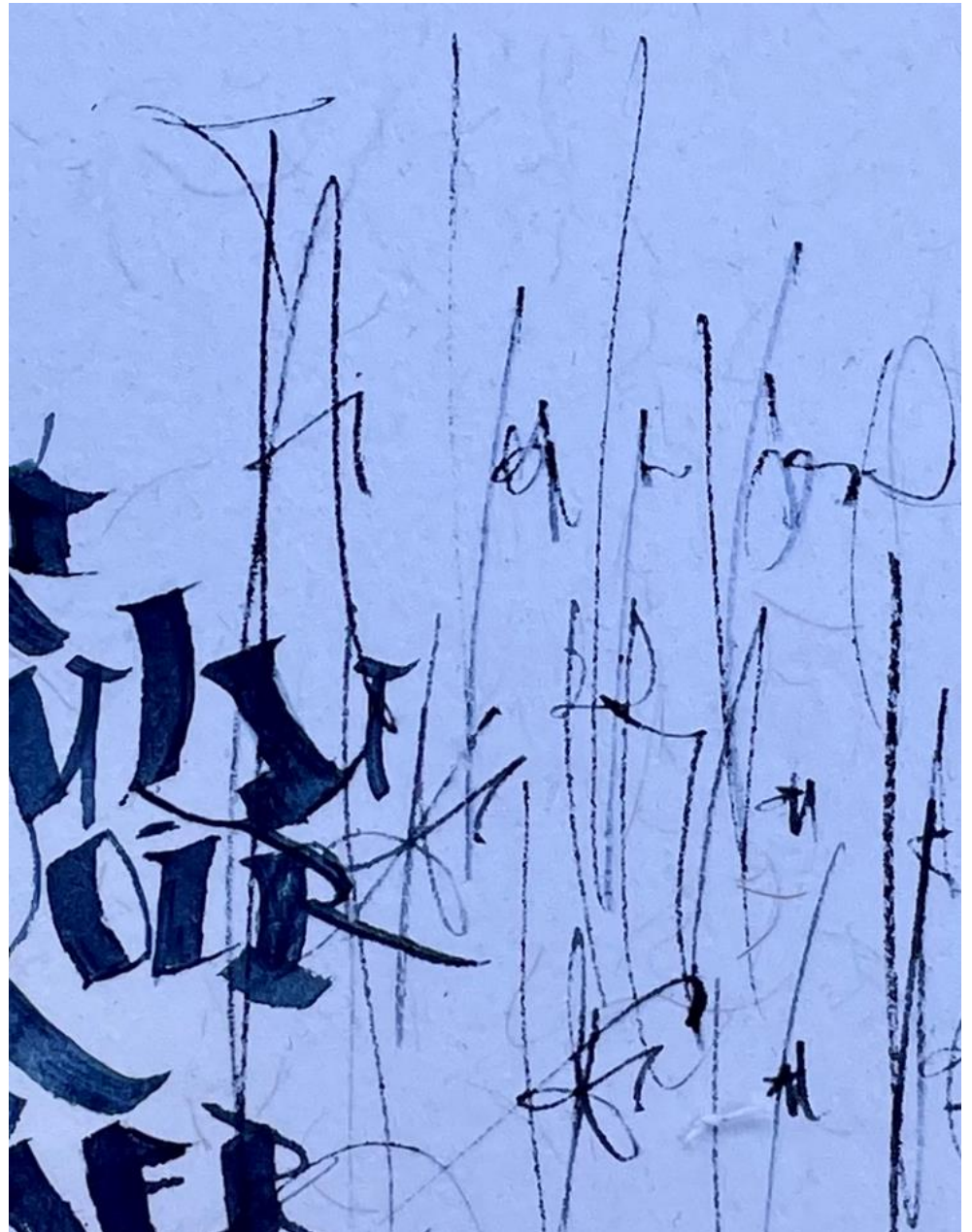


# Louise R continued

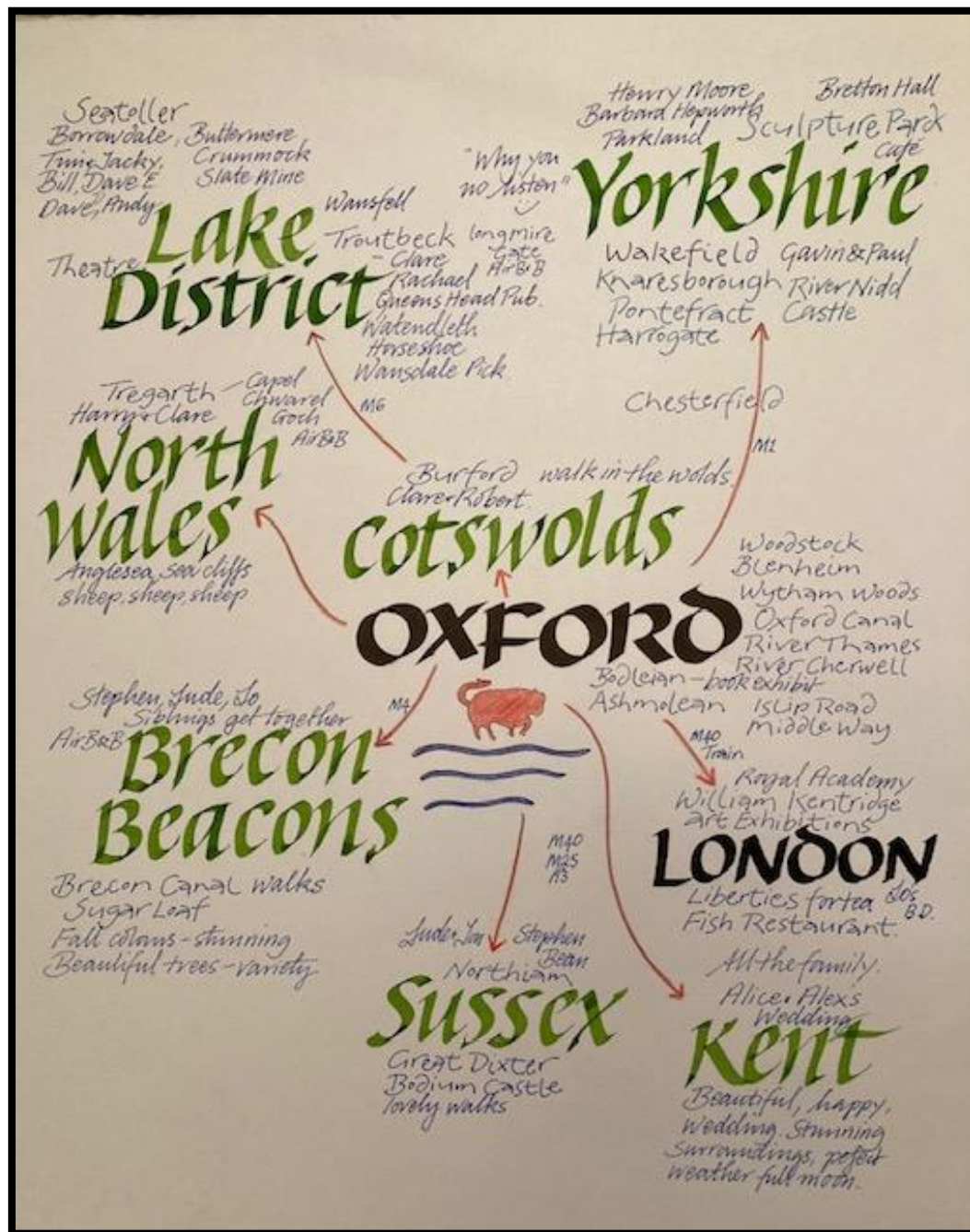




Louise R.  
continued







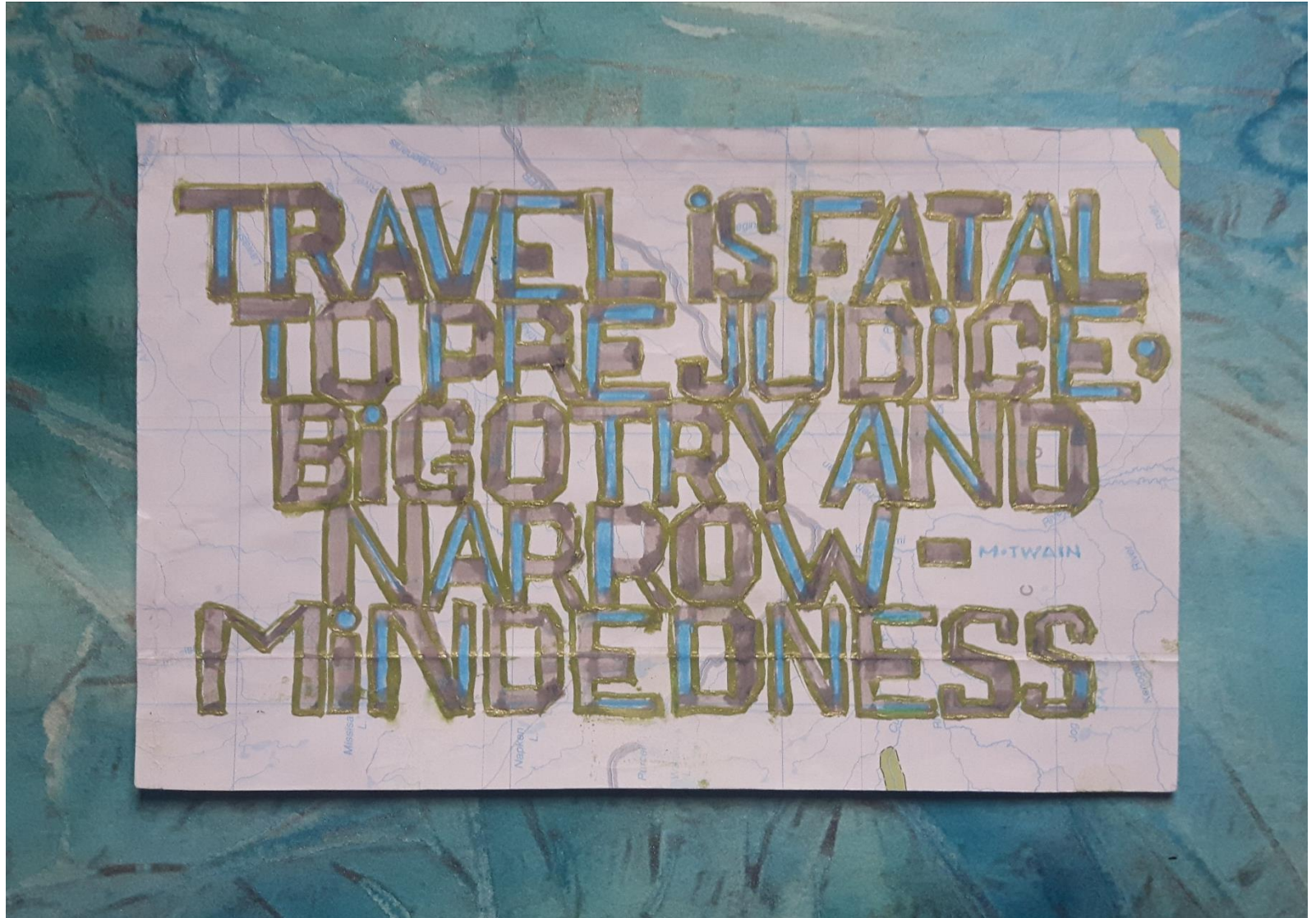
Sarah  
Widdowson

# Susan Keyes — Sleep Around





# Susan Mentis — Travel by TV



# Yogi Grunwald – May the Forest





# Yogi Grunwald - Pizza of My Heart

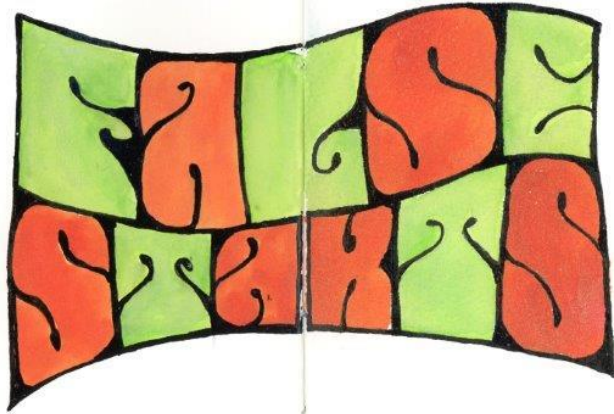


# Thea Lynn Paul – Journal Journeys





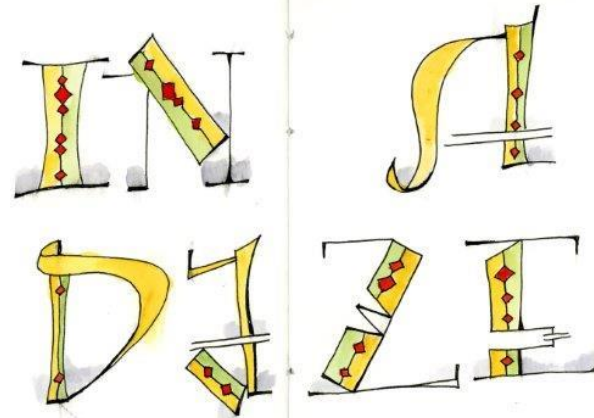
# Thea Lynn Paul - Journal Journeys



FALSE STARTS

without  
up looking  
even

YOU  
WE  
ABOUT  
TYPE  
THINGS  
THINK  
WORRY  
THOSE  
OF  
THINGS



# Thea Lynn Paul - Journalling

PERHAPS HE  
DIDN'T KNOW  
HIMSELF

MAKE IT UP  
AS YOU  
GO ALONG

Keep your EYE  
FOCUSED on the  
BIG PICTURE



LOUD &  
CLEAR



# Thea Lynn Paul - Journalling

FROLI  
CKING

CURT  
NOD

unmemorable  
rambling

TOOTH  
XNATIC

# Renate Worthington - København

## KØBENHAVN



We rolled our luggage around the corner to the main train station. People moving is figured out... sloped ramps as escalators, self-check out passport machines, quick to buy train tickets to the city (the train continues to Nordinger). Tap in, tap out! A two block walk past Rådhuspladsen, around TIVOLI GARDENS into our AirBNB. AT MIKKEL BRYGGERS GADE #10 - 3-bedrooms,

spacious living room & kitchen. Sloping floors add to the whimsy!

Great location - a short walk to

STRØGET \* & a bakery.

(\*Europe's longest pedestrian street)



PLAY WELL:  
LEG GODT

CASTLE: SLOT  
LITTLE: LILLE  
BIG: STORE

STREET: STRAEGE

AIRPORT TO CITY CENTRE: 14 minutes by train,  
36 DKK (\$7.30)

BEACH: STRAND

TOWN HALL - RÅDHUS

CENTRAL TRAIN STATION = HOVEDBANEGÅRDEN

OLD: GAMMEL  
SQUARE: PLADS

CAPITAS FOUNTAIN - the water source is 6 km. away.

BAKERY: instant breakfast with a bakery item, "APPELSINE" (orange juice), SKYR yogurt and coffee.

CITY HALL (RÅDHUS) BELLS TOLL ALL DAY, FROM 8 A.M. (EIGHT BELLS) TO LATE AT NIGHT.

SUNRISE IS 4:54 THIS TIME OF YEAR, SO MORNING COMES EARLY. SUNSET: 9:44.



## NYHAVN

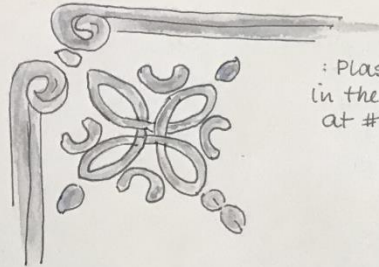
"New Harbour"

Patio dining under an umbrella/heater with blankets at SKIPPERKROEN - A BIT pricey\* but memorable - colourful buildings, ships, lots of visitors.

\*MOST \$\$\$ FISH & CHIPS EVER! :)



# Renate Worthington — Cafe Norden



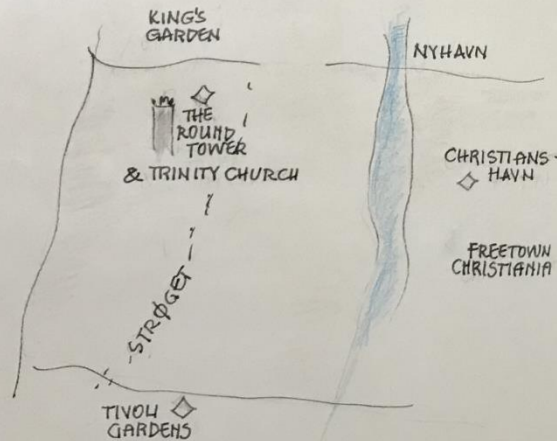
MAY 16

: Plaster ceiling ornament  
in the corners of our bedroom  
at #10 MIKKEL BRYGGER GADE

## CAFÉ NORDEN

Great lettering... just a walk by on Østergade,  
& Strøget, the pedestrian street.

and... PALAIS:HOTEL



## RUNDETAARN "The Round Tower"

Part of the Trinity Complex  
with church below, this tower,  
an observatory, was completed  
in 1642 during Charles IV reign.  
Astronomer TYCHO BRAHE died  
in 1601 & the king wished to  
continue Brahe's research.  
The 114 foot (34.8 m.) tower  
has a spiral ramp - wide  
enough to accommodate  
horse & carriage! (Peter the  
Great) and subsequent  
vehicles (bicycles, car, unicycle).  
Great views from the top...



THE SPIRAL RAMP

The sloped ramp  
spirals  $7\frac{1}{2}$  times  
to the top of the  
tower (except for  
a short narrow  
stairway at the  
very top).  
A LOT OF BRICK!

< [www.rundetaarn.dk](http://www.rundetaarn.dk) >

Halfway up the tower is the library hall, a venue  
for exhibitions, concerts & cultural events (1987)

And just a few meters from Annelie's house ..

## THE KIEL CANAL "NORDOST-SEE-KANAL"



The Kiel Canal is 98 km. in length, finished in 1895 but later widened. Average transit time is 8 hours (Kiel to Rendsburg 5 hrs, Rendsburg to Brunsbüttel 3 hours)

It links the North Sea to the Baltic Sea. To fit the locks at each end, maximum ship length is 771 feet, 106' wide, 7+69 m (22 feet)

Eleven bridges (clearance of 42 m. or 138 feet) and several ferries aid in crossing -

also a tunnel in Rendsburg for cars and for pedestrians -

(widened between 1907 and 1914) The German Navy wanted to link its bases in the Baltic and North Sea without needing to sail around Denmark (saving 250 nautical miles - or 460 km - and avoiding storm-prone seas .

This is the narrow part of Germany. Otherwise, it takes about 7½ hours to drive approximately 710 km.

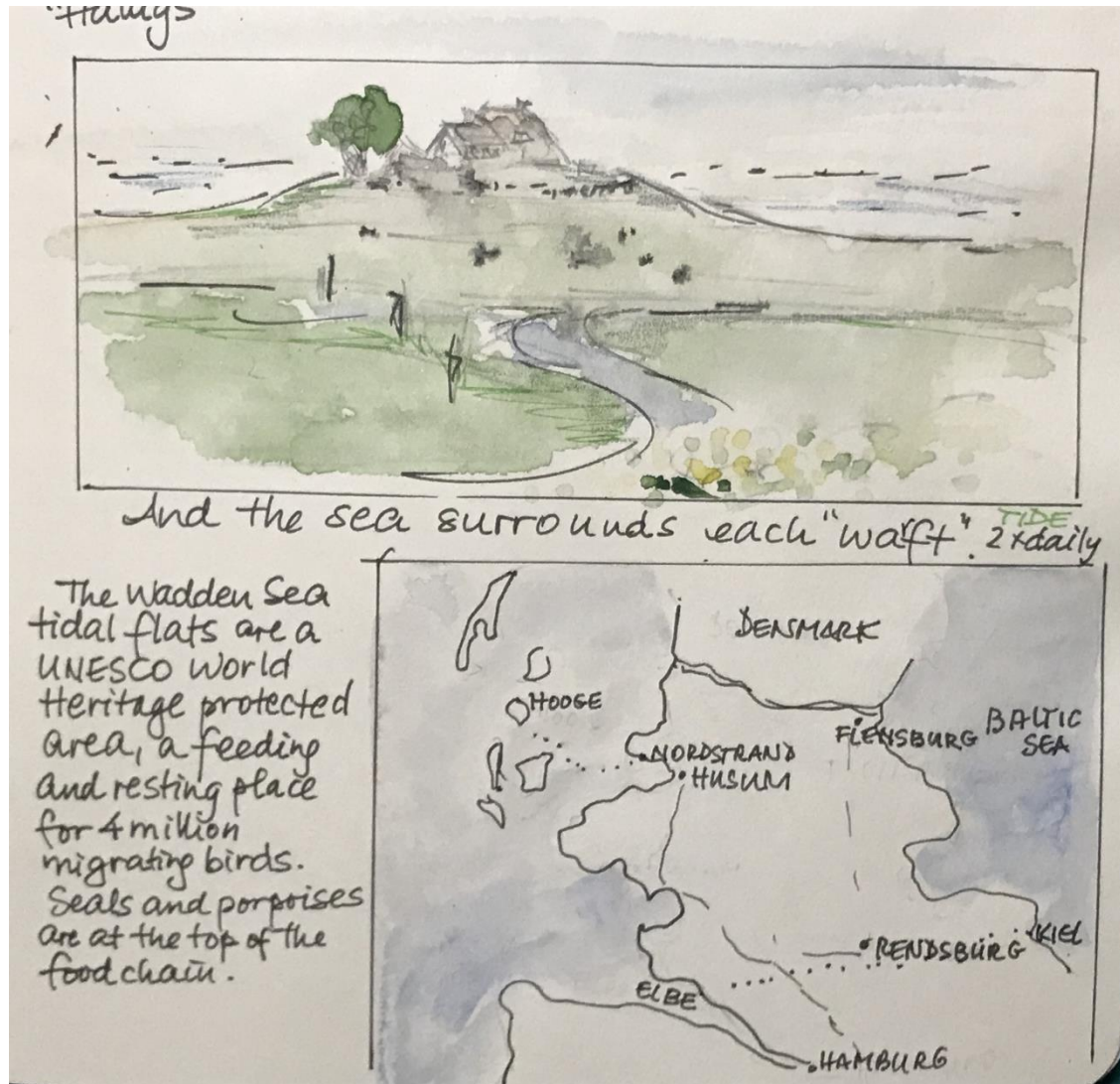
Canada, by comparison, takes 79 hours to cover 7100 km.

# Renate Worthington

## The Kiel Canal



# Renate Worthington — Wadden Sea / tidal flats



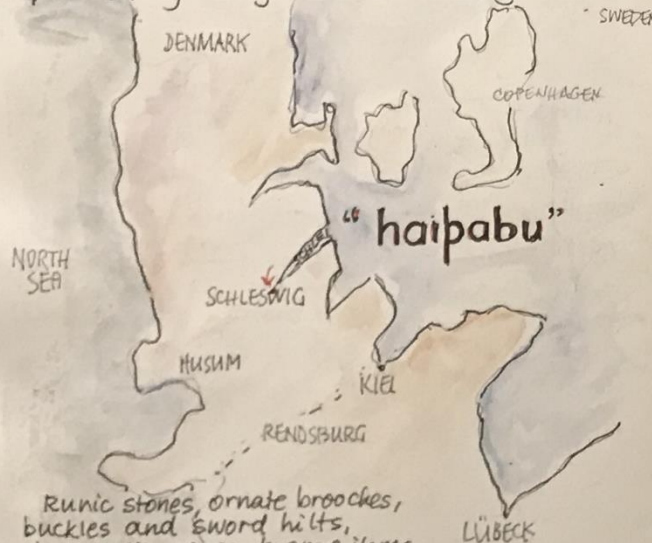
# Renate Worthington – Viking Museum

MAY 22 HADDEBY/HAITHABU/HEDEBY

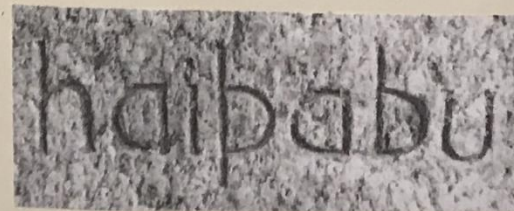
## Viking Museum

30 ml 12,000  
ITEMS FROM  
800 AD

Just south of Schleswig on the other side of the Schlei is an exhibition of the treasures found in some burial sites (70 of them) of the settlement of HAITHABU. Buried with their jewelry, tools, weapons, utensils, horses and ships, the Vikings, of some 2000 people had a complex society, a flourishing early medieval trading centre.

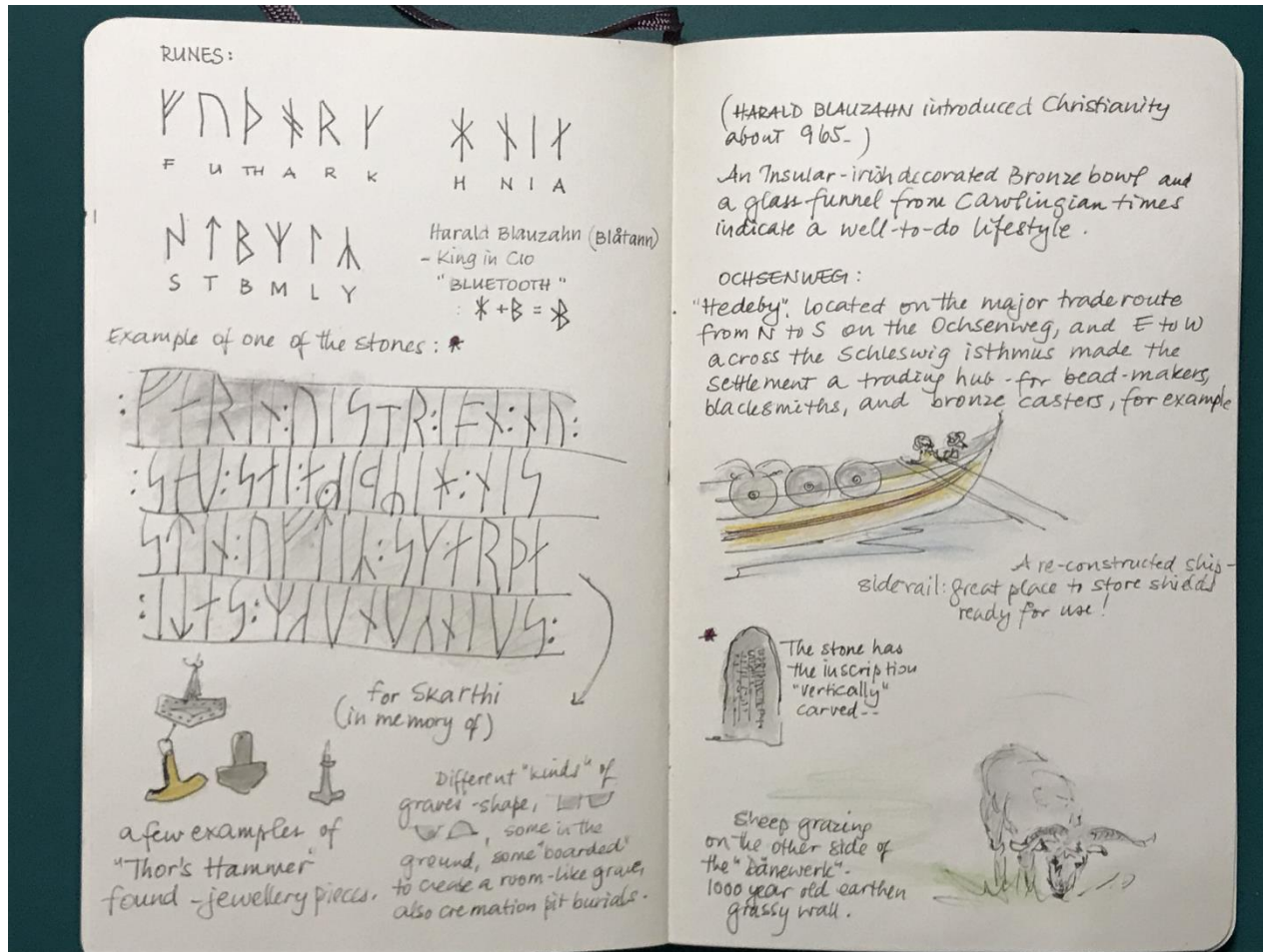


Runic stones, ornate brooches, buckles and sword hilts, iron nails, rings, bronze items, precious jewels from other countries, "Thor's Hammer" revered as jewelry. The settlement moved to SCHLESWIG in 1066. We did not have enough time to see the entire site, unfortunately, but did climb to the top of the hillfort & walled property.

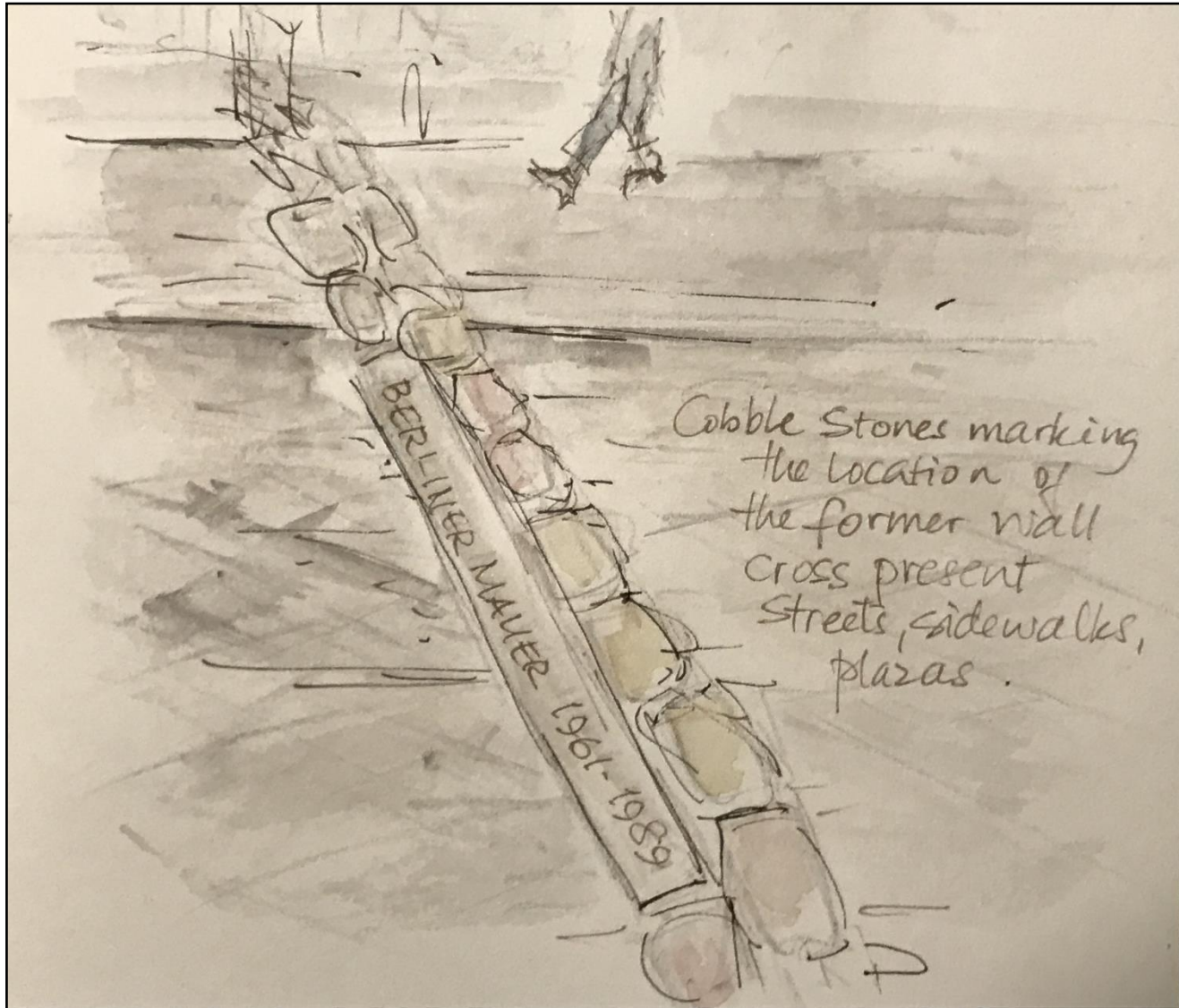




# Renate Worthington – Stones & Scripts



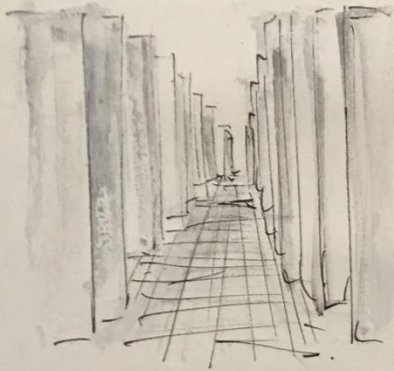
# Renate Worthington – The Wall





## HOLOCAUST MEMORIAL designed by PETER EISENMAN

"MEMORIAL TO THE MURDERED JEWS OF EUROPE"  
is a 200,000 square foot site covered with 2,711 concrete slabs. Each of these "stelae" is 7'10" long (2.38 m), 3' wide (.95 m), but the slabs vary in height from 8" (.2 m) to 15'5" (4.7 m) in height. They are arranged in a grid. ~~III~~ from afar, you can see the layout - 54 rows north/south and 87 rows east/west. Walking along the "corridors" between the concrete uprights is completely unsettling. The path dips and rises, it is strangely quiet. The sunshine doesn't reach into the core. You feel hopeless, baffled.



One feels  
barricaded  
from the rest of  
the city,  
isolated,  
uneasy-  
fearful.  
We followed  
Paula for a  
few seconds  
until we  
"lost" her.

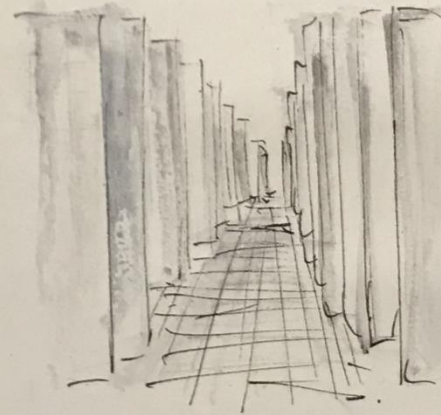
My resulting mild sense of panic  
gave me an inkling of the despair  
felt by those who were trapped and  
persecuted.

An adjacent building holds the names of  
approximately 3 million Jewish Holocaust  
victims.

# Renate Worthington Holocaust Museum

# Renate Worthington Holocaust Memorial

HOLOCAUST MEMORIAL designed by PETER EISENMAN  
"MEMORIAL TO THE MURDERED JEWS OF EUROPE"  
is a 200,000 square foot site covered with 2,711  
concrete slabs. Each of these "stelae" is 7'10"  
long (2.38 m.), 3' wide (.95 m), but the slabs  
vary in height from 8" (.2 m) to 15'5" (4.7 m) in  
height. They are arranged in a grid. ~~III~~  
from afar, you can see the layout - 54 rows  
north/south and 87 rows east/west.  
Walking along the "corridors" between  
the concrete uprights is completely  
unsettling. The path dips and rises,  
it is strangely quiet. The sunshine doesn't  
reach into the core. You feel hopeless, baffled.



One feels  
barricaded  
from the rest of  
the city,  
isolated,  
uneasy-  
fearful.  
We followed  
Paula for a  
few seconds  
until we  
"lost" her.

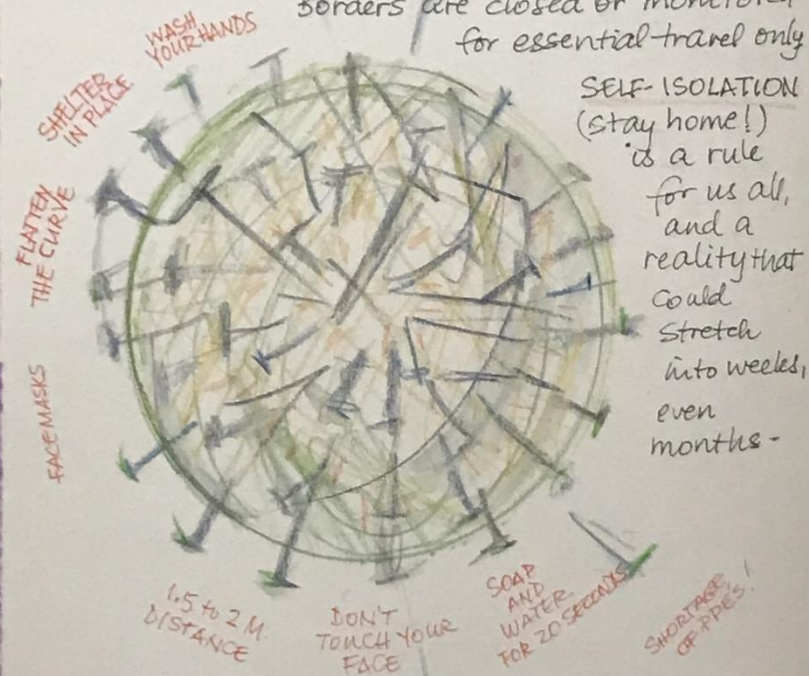
My resulting mild sense of panic  
gave me an inkling of the despair  
felt by those who were trapped and  
persecuted.

An adjacent building holds the names of  
approximately 3 million Jewish Holocaust  
victims.



MARCH 7. Bluegrass music at  
STUDIO BOLD -- just before the craziness of  
COVID

MARCH 2020  
24 The world has one focus - to stem the  
spread of the novel coronavirus. First diagnosed in Wuhan  
China four months ago, the virus has affected countries  
across the globe, with 395,647 cases (today), about double  
what was said for March 12th. Paula arrived home from  
Utah on the 10th and international travel was not  
recommended by March 12th. Our Victoria trip,  
calligraphy classes, schools, libraries,  
bars, restaurants, playgrounds -- all  
closed. National Parks are closed -  
Borders are closed or monitored  
for essential travel only



#### NOW FAMILIAR NAMES & FACES :

- DR. BONNIE HENRY (BC Medical Officer)
- DR. PATTY HANU (Minister of Health)
- DR. DEENA HINSHAW (AB chief medical health officer)
- DR. TERESA TAM (chief public health officer)

# Renate Worthington

## One Focus

# September 2021.

1. A little too much excitement for Inge and friend Heather who see a GRIZZLY BEAR at Ptarmigan Cirque. and Inge falls in a rocky area getting down the path. Great piece of the bear, no broken bones... whew, good ending.  
(Meanwhile I'm monitoring the furnace/duct cleaners.)
4. Coffee & Pancakes at Paula's. Perfect weather too.



Renate  
Worthington  
A Little Too Much  
Excitement



## A collection of travel items is displayed on a light-colored, textured surface. In the top left is a dark blue passport cover with the text "WHERE TO NEXT?" in white. Below it is a Rick Steves Sicily travel guide, showing a scenic view of a Sicilian town and the title "SICILY" in large white letters on a blue background. To the right is a spiral-bound notebook with a hand-drawn map of Sicily. The map is filled with various locations and cultural references, including Palermo, Catania, Taormina, and Agrigento, along with illustrations of a Vespa scooter, a windmill, and a sun.

